

Answer all the questions.

Each question is followed by four options lettered A to D. Find the correct option for each question. Shade in pencil on your answer sheet, the answer space which bears the same letter as the option you have chosen.

Give only one answer to each question. An example is given below.

Which of the following is the most common form of migration in developing countries?

- A. Rural-rural
- B. Rural-urban
- C. Urban-rural
- D. Urban-urban

The correct answer is rural-urban, which is lettered B, and therefore answer space B would be shaded.

A  B  C  D

Think carefully before you shade the answer spaces; erase completely any answers you wish to change.

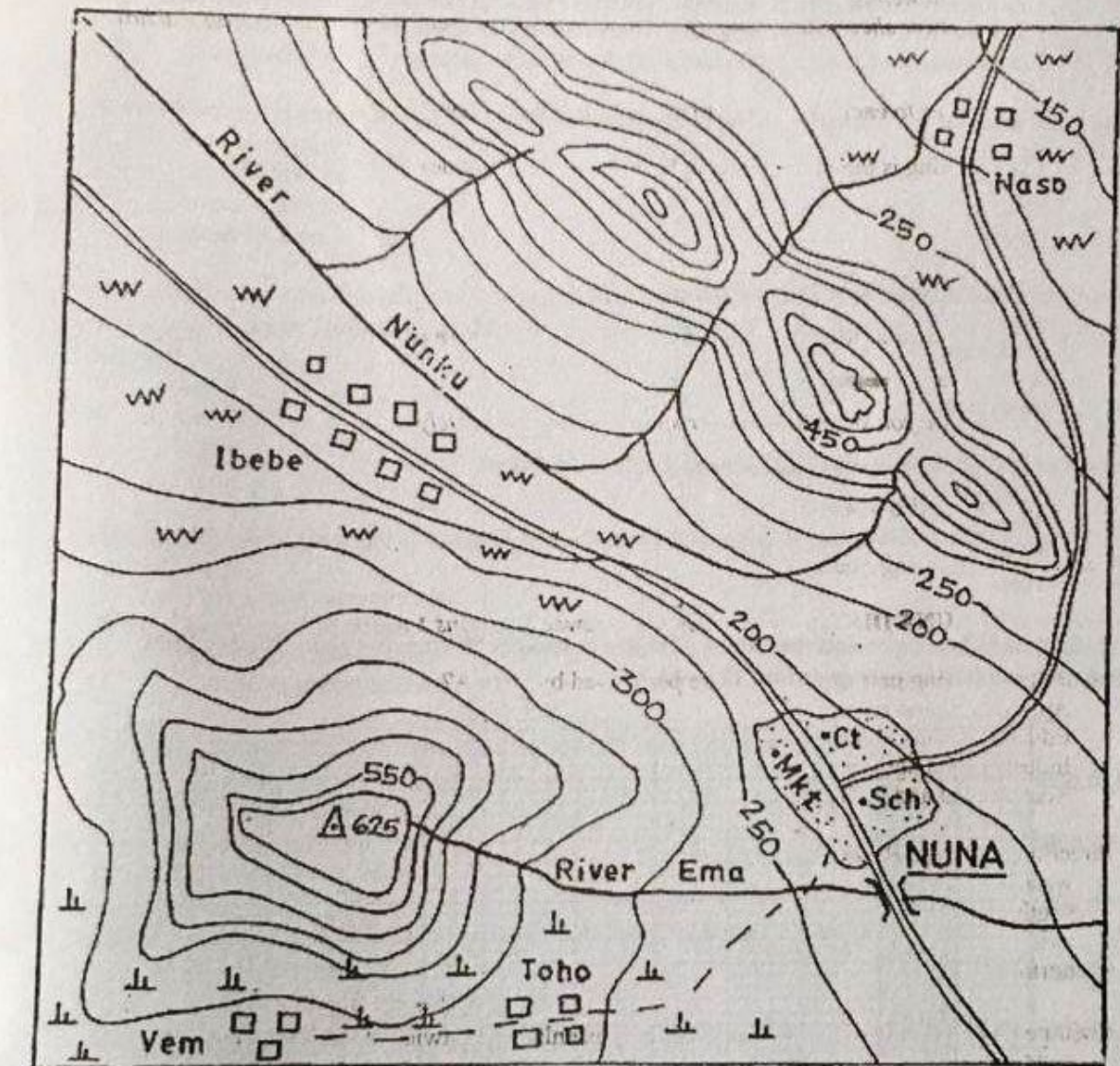
Do all rough work in this question paper.

Now answer the following questions.

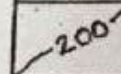
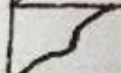
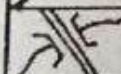

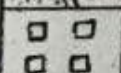
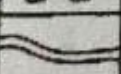
Study the map of NUNA DISTRICT and use it to answer questions 1 to 10.

1. Which of the following pair of functions are performed by NUNA?
  - A. Agricultural and recreational
  - B. Educational and commercial
  - C. Industrial and agricultural
  - D. Recreational and industrial
2. The direction of flow of River Ema is
  - A. west.
  - B. south.
  - C. east.
  - D. north.
3. What will be the new scale of the outline if the map is enlarged to twice its original size?
  - A. 1: 25,000
  - B. 1: 200,000
  - C. 1: 150,000
  - D. 1: 50,000
4. The area of the map is approximately
  - A. 150 km<sup>2</sup>.
  - B. 331 km<sup>2</sup>.
  - C. 221 km<sup>2</sup>.
  - D. 180 km<sup>2</sup>.
5. What is the approximate distance by road from Naso to NUNA?
  - A. 4.5 km
  - B. 117.0 km
  - C. 12.0 km
  - D. 7.0 km
6. The symbol  $\Delta$  625 in the mapped area is a
  - A. spot height.
  - B. boundary pillar.
  - C. benchmark.
  - D. trigonometrical station.

# NUNA DISTRICT

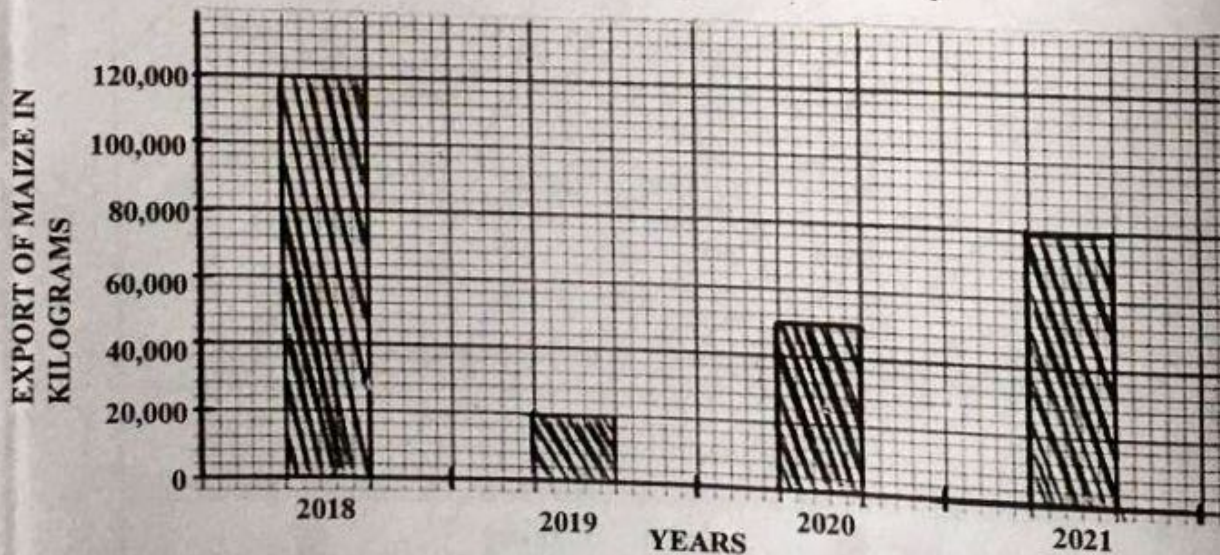


1: 100,000

	Contour in metres	•Ct	Court
	River	•Mkt	Market
	Bridge	•Sch	School
	Built-up Settlement	⊥ ⊥	Savanna
	Other Settlement	ww ww	Scattered Cultivation
	Road	- - -	Footpath

7. What is the scale of the map in statement form?
- 1 centimetre on the map represents  $\frac{1}{2}$  kilometre on the ground
  - 1 centimetre on the map represents 3 kilometres on the ground
  - 1 centimetre on the map represents 2 kilometres on the ground
  - 1 centimetre on the map represents 1 kilometre on the ground
8. The **main** mode of transportation in the mapped area is by
- air.
  - rail.
  - road.
  - water.
9. The ridge in the mapped area is found **mainly** in the
- west.
  - north east.
  - south.
  - south west.
10. Which of the following settlements is intervisible from Ibebe?
- NUNA
  - Toho
  - Naso
  - Vem

The diagram below represents the export of maize in country **W** from the years 2018 to 2021. Study and use it to answer questions 11 to 13.



11. In which of the following years did country **W** had the **least** production of maize for export?
- 2021
  - 2018
  - 2019
  - 2020
12. The total production of maize exported by country **W** from the years 2018 to 2021 was
- 207,000.
  - 720,000.
  - 702,000.
  - 270,000.

13. What is the name of the statistical technique used to represent the data?
- Pie chart
  - Bar graph
  - Star graph
  - Line graph
14. A river's valley increases in length through the process of
- headward erosion.
  - vertical erosion.
  - lateral erosion.
  - sheet erosion.
15. The commentary of a football match which started 15.00 hours G.M.T in Town F located on longitude  $30^{\circ}$  W was heard in Town G at 21.00 hours G.M.T. What is the longitude on which Town G is located?
- $60^{\circ}$  E
  - $45^{\circ}$  W
  - $60^{\circ}$  W
  - $45^{\circ}$  E
16. Which of the following pair of landforms are formed as a result of compression during crustal movements?
- Plateau and escarpments
  - Inselbergs and plains
  - Rift valleys and dolines
  - Anticlines and synclines
17. A unique characteristics of manufacturing industries in Tropical Africa is
- capital intensive.
  - large scale in plant.
  - labour intensive.
  - high level of technology.
18. Which of the following measures can reduce the problem of global warming?
- Burning of fossil fuels
  - Application of chemical fertilizers
  - Afforestation
  - Rapid industrialization
19. Which of the following pair of factors result in high population density?
- Intensive agriculture
  - Industrialization
  - Inaccessibility
  - Mineral exploration
- I and III only
  - III and IV only
  - I and IV only
  - II and III only
20. Which of the following industries is the availability of raw materials a major consideration for siting it?
- Electrical goods industries
  - Automobile industries
  - Iron and steel industries
  - Beverage industries

21. The **most** suitable mode of transportation used to convey bulky goods like bauxite across countries is by
- air.
  - water.
  - road.
  - rail
22. One relative advantage of road transportation over other modes of transportation is that road transportation
- is flexible.
  - saves time.
  - convey bulky goods.
  - cover long distances.
23. The movement of people from one geographical location to another **either** for temporal or permanent settlement is called
- conurbation.
  - megalopolis.
  - migration.
  - transition.
24. Farmsteads, hamlets and villages are examples of
- megalopolis.
  - urban settlement.
  - rural settlement.
  - conurbation.
25. A **major** factor that explains the establishment of industries in some rural areas in Africa is to
- enhance the development of rural areas.
  - cause traffic congestion in rural areas.
  - escalate crime in rural areas.
  - encourage rural-urban migration.
26. The mining process where the ore is located close to the surface and involves the removal of the overburden by excavators is
- open cast mining.
  - deep shaft mining.
  - panning.
  - dredging.
27. Which of the following environmental hazards is **common** in the coastal areas of the West African sub-region?
- Drought
  - Flooding
  - Deforestation
  - Desertification
28. Which of the following sources of energy can be described as renewable?
- Coal
  - Solar
  - Natural gas
  - Nuclear
29. Which of the following is **best** associated with tourism?
- Rural settlement
  - Nodal town
  - Commercial hub
  - Holiday resort

30. Rural-urban migration results in
- over population of rural areas.
  - depopulation of rural areas.
  - depopulation of urban areas.
  - stable population in rural areas.
31. On September 23<sup>rd</sup> each year, all places in the northern hemisphere experience
- complete daylight for 14 hours.
  - partial darkness.
  - equal length of day and night.
  - longer period of twilight
32. Which of the following statements distinguishes rotation from revolution?
- Rotation is the movement of the earth on its axis from west to east while revolution is the movement of the earth around the sun in its elliptical orbit.
  - Rotation causes variation in the lengths of day and night while revolution causes rising and falling of tides.
  - A complete revolution takes 24 hours while rotation marks a year.
  - Revolution causes day and night while rotation causes seasons.
33. The type of climate with the **highest** diurnal range of temperature is the
- hot desert climate.
  - cool temperate climate.
  - mediterranean climate.
  - equatorial climate.
34. Which of the following **best** explains artesian basin?
- Underground water in a limestone region
  - Disappearing streams in limestone regions
  - Layers of permeable rock lying between two layers of impermeable rock
  - Spring water and surface running water
35. Two settlements **A** and **B** are located on longitude 20° E. If settlement **A** is located on latitude 5° S and settlement **B** is located on latitude 10° S, What is the distance in kilometres between the two settlements?
- 111 km
  - 1665 km
  - 555 km
  - 333 km
36. The steep-sided, flat floored valley found in a hot desert area which is occasionally occupied by an intermittent stream is called
- inselberg.
  - gorge.
  - canyon.
  - wadi.
37. Which of the following landforms is **not** associated with advancing shoreline?
- Spit
  - Tombolo
  - Beach
  - Stack
38. Which of the following is a landform found at the lower course of a river?
- Cataracts
  - Waterfalls
  - Meanders
  - Interlocking spurs

39. Subtracting the minimum temperature from the maximum temperature of the day is the method for calculating
- mean daily temperature.
  - monthly range of temperature.
  - mean monthly temperature.
  - daily range of temperature.
40. The time at the Greenwich meridian is 2.00 p.m. What will be the time at longitude 45° E?
- 11.00 a.m
  - 5.00 a.m
  - 5.00 p.m
  - 11.00 p.m
41. Lines drawn on maps connecting places with equal salinity are called
- isohalines.
  - isohyets.
  - isohels.
  - isotherms.
42. Attrition, deflation and abrasion are processes of
- soil erosion.
  - wind erosion.
  - river erosion.
  - coastal erosion.
43. Shield volcanoes are formed when there is successive eruptions of
- basic lava.
  - hot gases.
  - volcanic plug.
  - acid lava.
44. Coal and sandstone are examples of
- sedimentary rocks.
  - volcanic rocks.
  - igneous rocks.
  - metamorphic rocks.
45. The **most** important agent that modifies the coastline is
- force of gravity.
  - wave.
  - wind.
  - ocean current.
46. The Himalayas, Andes and Atlas are examples of
- Block mountains
  - Residual mountains
  - Volcanic mountains
  - Fold mountains

47. Which of the following pair of landforms are associated with limestone regions?
- Yardangs and zeugens
  - Depressions and salt lakes
  - Hot springs and geysers
  - Grikes and clints
48. The shape of the earth is best described as geoid because
- it widens at the poles.
  - the axis is perpendicular.
  - it is tilted at the poles.
  - it flattens at the poles.
49. Caldera lakes are associated with
- vulcanicity.
  - folding.
  - faulting.
  - earthquake.
50. Which of the following pairs are uses of vegetation resources?
- Food supply
  - Deforestation
  - Timber sources
  - Fuel wood sources
- I and IV only
  - II and IV only
  - II and III only
  - I and II only

**END OF PAPER**